

PARTY SUPPLIERS
&
RENTALS

Tenting F.A.Q.'s

WHEN PLANNING AN EVENT THAT INVOLVES TENTING, THERE ARE VARIABLE FACTORS THAT ONE MUST CONSIDER. THE RENTAL COORDINATORS AT PARTY SUPPLIERS AND RENTALS ARE HAPPY TO ANSWER ANY QUESTIONS THAT YOU MAY HAVE WHEN IT COMES TO TENTING.

S O M E T H I N G S T O C O N S I D E R W H E N B O O K I N G A T E N T

QUESTIONS TO THINK ABOUT:

- ◆ On what kind of surface will the tent be placed...grass/concrete/asphalt/decking?
- ◆ Is there any irrigation or other underground conditions that could be affected by the use of stakes?
- ◆ How much space do you have? What are the dimensions of the tent site?
- ◆ Does the venue allow for stakes to be driven into the ground?
- ◆ How many people do you wish to accommodate under the tent and in what type of configuration...all seated at tables/partial seating/cocktail party setting?
- ◆ What other items would you like to include under the tent...stage/dance floor/bars/buffet/cake table/etc.?
- ◆ What time of day will your event take place? Will your event require lighting?
- ◆ Is there a power source at the site, or will you need a generator?
- ◆ Do you wish to enclose any portion of the tent?
- ◆ Will you need separate tenting for catering?



TYPES OF TENTS



FRAME TENTS

Features a skeleton of aluminum framework and steel connectors to support the white vinyl tent top. Although this style of tent is “free-standing” by design, it will still require anchoring to resist rain/wind forces.

Do not have interior center poles.

Made of waterproof white vinyl.



POLE TENTS

Rely on tension within the membrane to hold the shape of the tent. These tents are supported by a single or multiple center pole(s) in the middle of the tent and a series of side poles around the perimeter, which must be staked into the ground.

Features high swooping peaks.

Made of waterproof white vinyl.



SAILCLOTH/TIDEWATER TENTS

NANTUCKET | AURORA

Sailcloth/tidewater tents give you the feeling of floating under a parachute. The ends of these tents are round, not square. The tent tops are made of an opaque fabric and the poles are made of wood. As with a standard pole tent, these tents are supported by a single or multiple center pole(s) in the middle of the tent and a series of side poles around the perimeter, which must be staked into the ground.

Made of water-resistant cloth.



CLEAR TOP FRAME TENTS

Clear top tents are structured in the same manner as traditional frame tents. They are best utilized for functions in the late fall and winter months.

We DO NOT RECOMMEND the use of clear tents during the spring, summer, and early fall months, as the tent will create a warming “greenhouse effect” for vendors and guests. The tent will heat up under the sun, and will not have the opportunity to cool down throughout the day.

Made of waterproof clear vinyl.

TENT ACCESSORIES



SIDEWALLS

Sidewalls are made of a waterproof vinyl that act as a barrier between the tent's interior and outside elements such as rain/wind. They protect guests and rentals against the sun's damaging rays, providing cooling shade and UV protection during the warmer months. In the winter months, sidewalls enclose heat provided by outdoor heaters.

Sidewalls are offered in a variety of options to suit your needs:

Solid: (white vinyl)

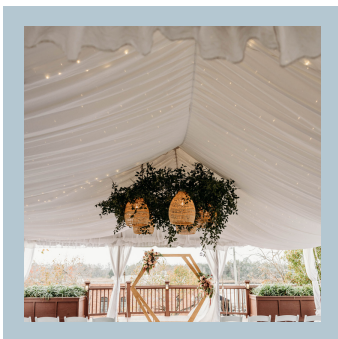
Windowed: (white vinyl with a clear vinyl window)

Clear: (clear vinyl)



POLE DRAPES

Leg and center pole drapes are fabric covers that slide over the legs of the tent, to conceal the poles.



TENT LINERS

A tent liner is a soft, billowy white fabric lining installed in the ceiling of a standard frame tent.

Tent liners are intended to mask the interior framework of the tent.



LIGHTING

While we are not lighting experts (we have great recommendations for that) we do offer standard, basic globe lighting, at an additional rental.

Globe lights add just enough light to softly illuminate the interior of a tent.

Globe lights are installed on each of the side poles.

CLIMATE CONTROL

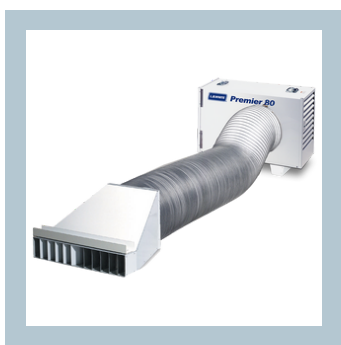
For the colder months, we offer tent heaters and propane for an additional rental.

Our portable heater units are placed outside of the tent, and the heat is piped in (through ducts and diffusers) to the tent to take the chill off of your guests and make them more comfortable during the event.

We DO NOT offer fans or air conditioning units during the warmer months, but are happy to provide recommendations for those items

ALTERNATIVE STAKING

For tent installations where ground staking is not permitted (i.e. concrete parking lot, underground wires/irrigation, etc.) we offer concrete blocks to secure the tent, at an additional rental.



TROPICAL STORMS AND HURRICANES

Tents are NEVER to be used as a storm shelter! In severe weather, including but not limited to lightning, heavy rains, and high winds, the tent should be evacuated! Clients are responsible for creating an inclement weather backup/emergency evacuation plan for their event.

HURRICANE WATCH

If a tent is already up, it can stay up and Party Suppliers and Rental will come out and ensure that all straps are secured properly; however new/scheduled tent reservations will NOT go up.

HURRICANE WARNING

All tents that are up will come down and new/scheduled tent reservations will NOT go up.